

# 1822 SCARTH STREET

REGINA, SK



## BUILDING HIGHLIGHTS

- Located in the heart of downtown Regina, on Scarth Street, between 11th and 12th Avenues.
- Frontage onto the downtown pedway system, and adjacent to the Hill Centre Parkade, providing foot traffic and visibility, alongside an abundance of covered parking stall opportunities.
- Pedway access to the Cornwall Centre, via the Bank of Montreal building, in addition to the Hill Centre Tower I, II, and III via the Hill Centre Parkade.
- Shared common area on the 2nd floor, which features men's and women's washrooms.
- Major tenants in the vicinity include Bank of Montreal, The Globe Theatre, SaskTel, SGI, CIBC, FCC.
- Excellent access to all major transit routes.
- Close proximity to all downtown amenities, restaurants, retail and hotels.
- Professionally managed and maintained by the Property Management team at Harvard Developments.

## AVAILABLE SPACE

SUITE 100	4,263 SQUARE FEET
SUITE 200	2,835 SQUARE FEET
RENTAL RATE   NEGOTIABLE	OP COSTS & PROPERTY TAXES \$17.98 PSF PER ANNUM

### CHANTAL BLAISDELL

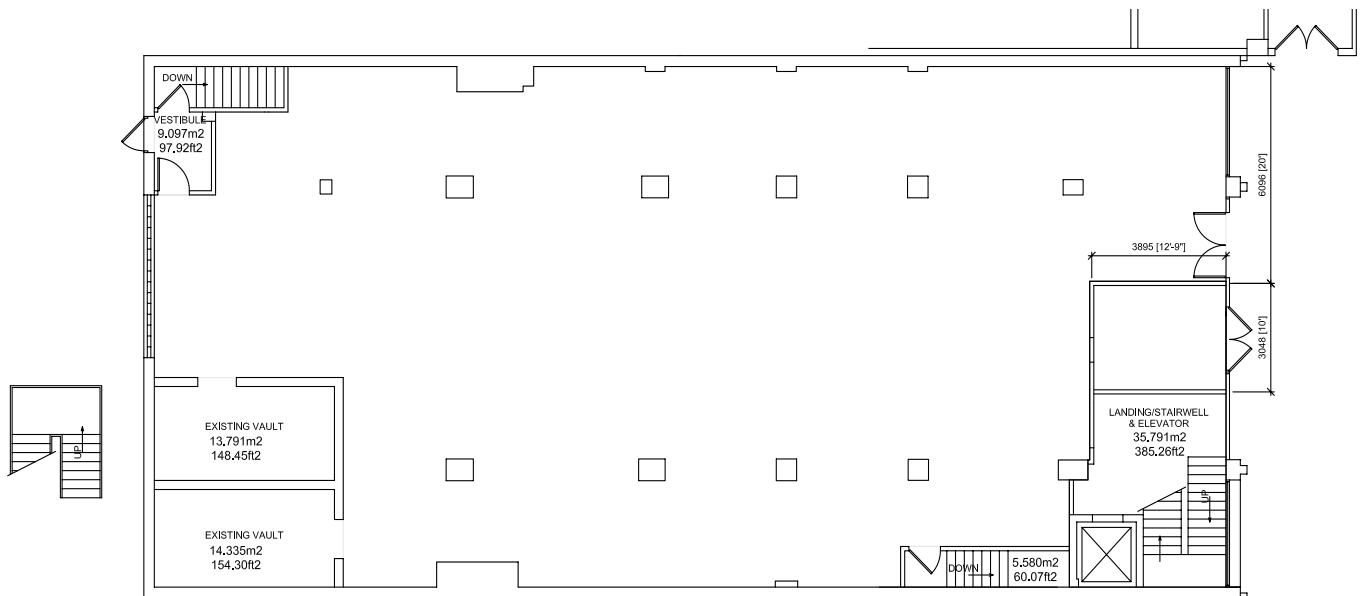
LEASING MANAGER, HARVARD DEVELOPMENTS

T | 306.777.0641 E | cblaisdell@harvard.ca

1822 SCARTH STREET  
REGINA, SK

SUITE 100

4,263  
SQUARE FEET



 1 MAIN FLOOR PRELIMINARY PLAN  
A1.1 SCALE:NTS

CHANTAL BLAISDELL

LEASING MANAGER, HARVARD DEVELOPMENTS

T | 306.777.0641

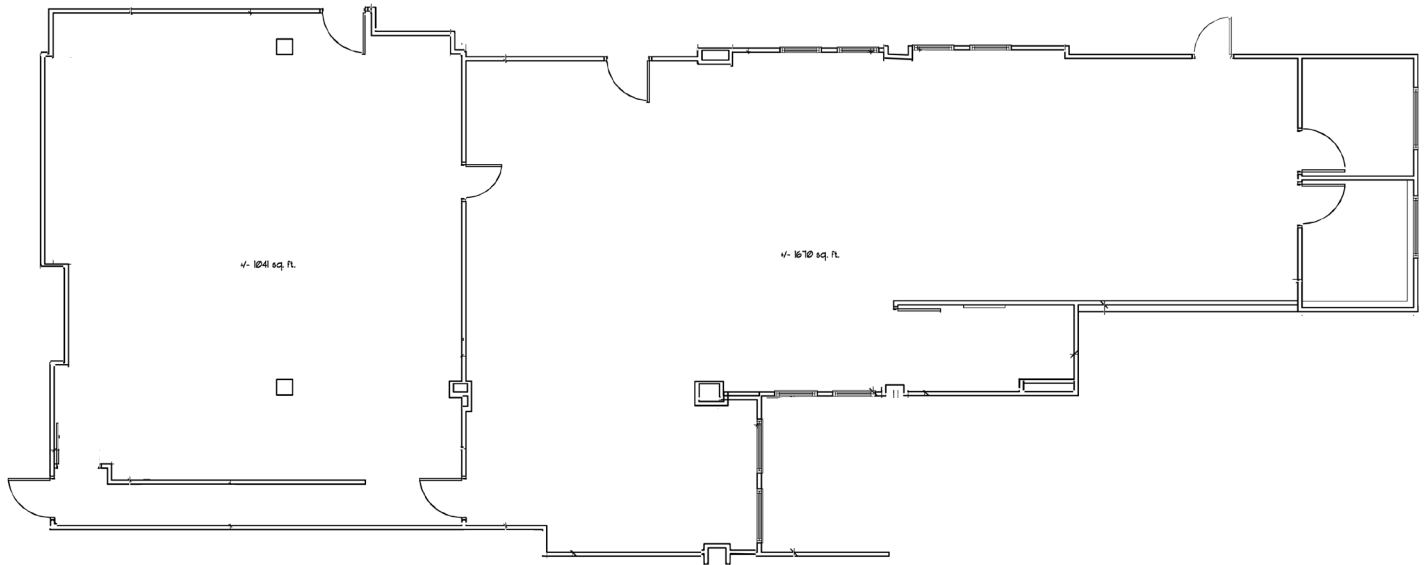
E | cblaisdell@harvard.ca

# 1822 SCARTH STREET

REGINA, SK

SUITE 200

2,835  
SQUARE FEET



EXISTING FLOOR PLAN

**CHANTAL BLAISDELL**

LEASING MANAGER, HARVARD DEVELOPMENTS

T | 306.777.0641

E | [cblaisdell@harvard.ca](mailto:cblaisdell@harvard.ca)